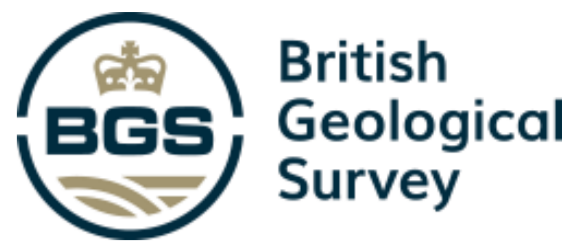
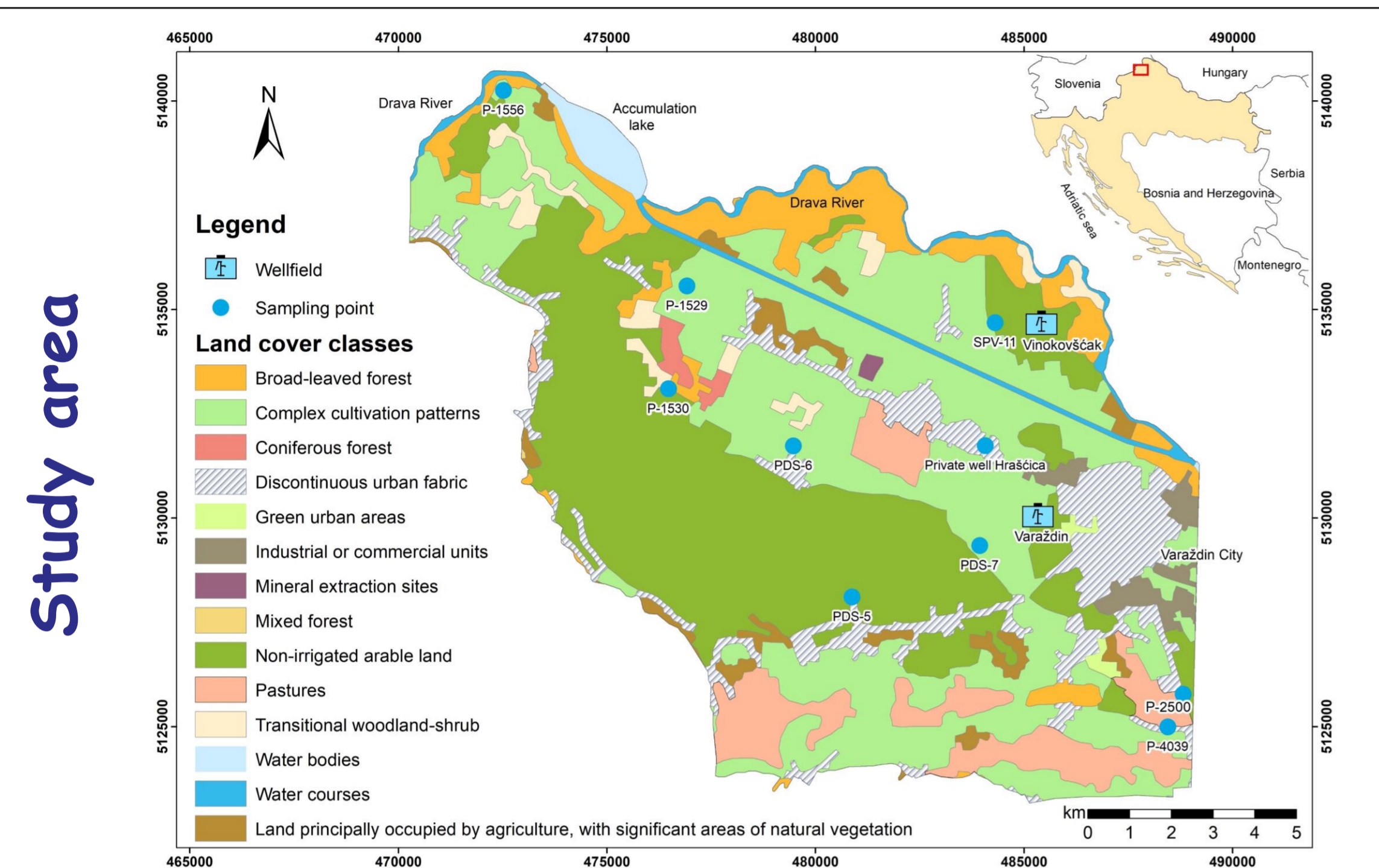


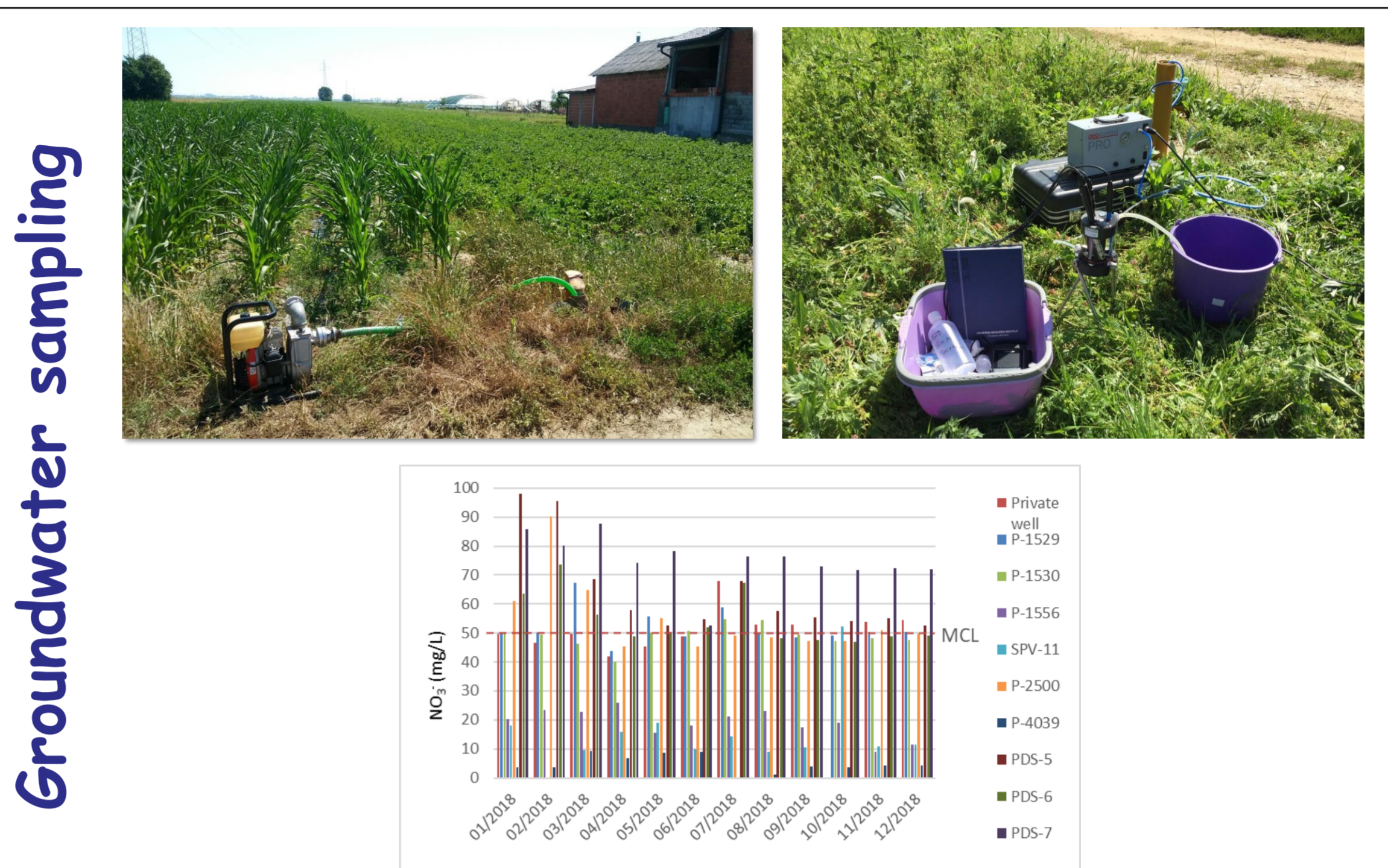
Igor Karlović¹, Tamara Marković¹, Andrew Smith², Tjaša Kanduč³



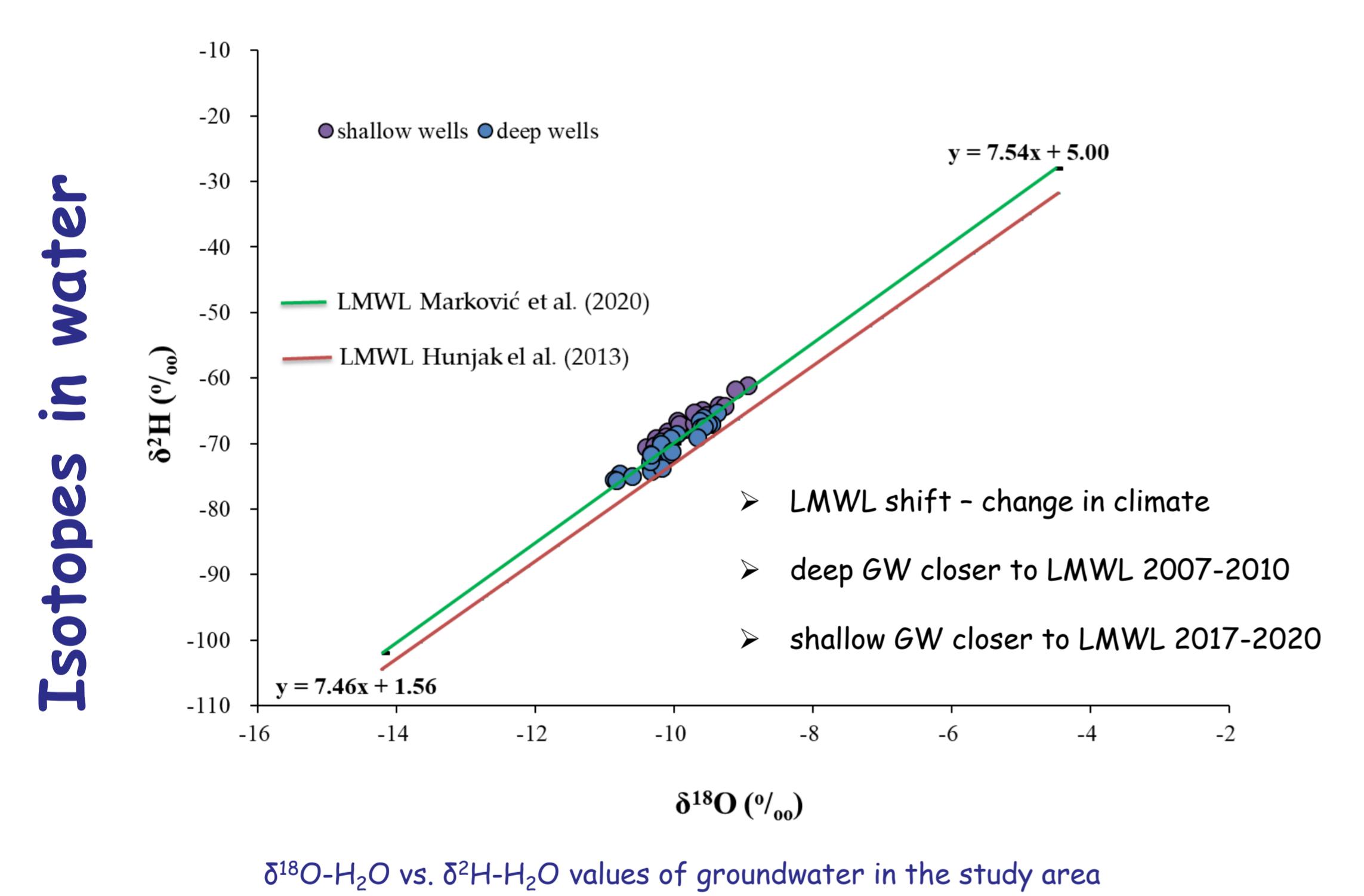
1. Croatian Geological Survey, Croatia
2. National Environmental Isotope Facility, British Geological Survey, UK
3. Department of Environmental Sciences, Jožef Stefan Institute, Slovenia



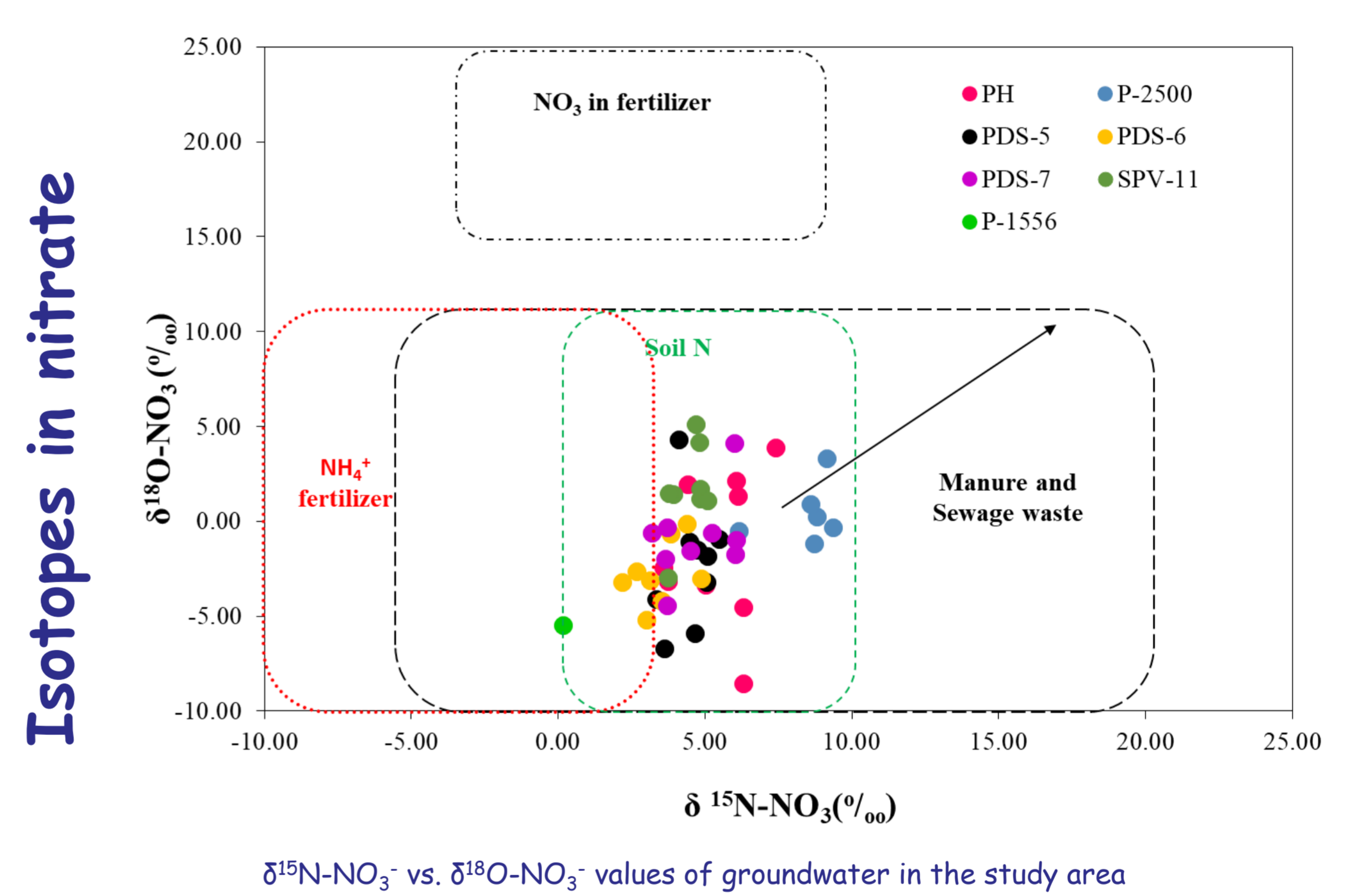
Study area with land use classes according to Corine Land Cover 2018 and groundwater sampling points



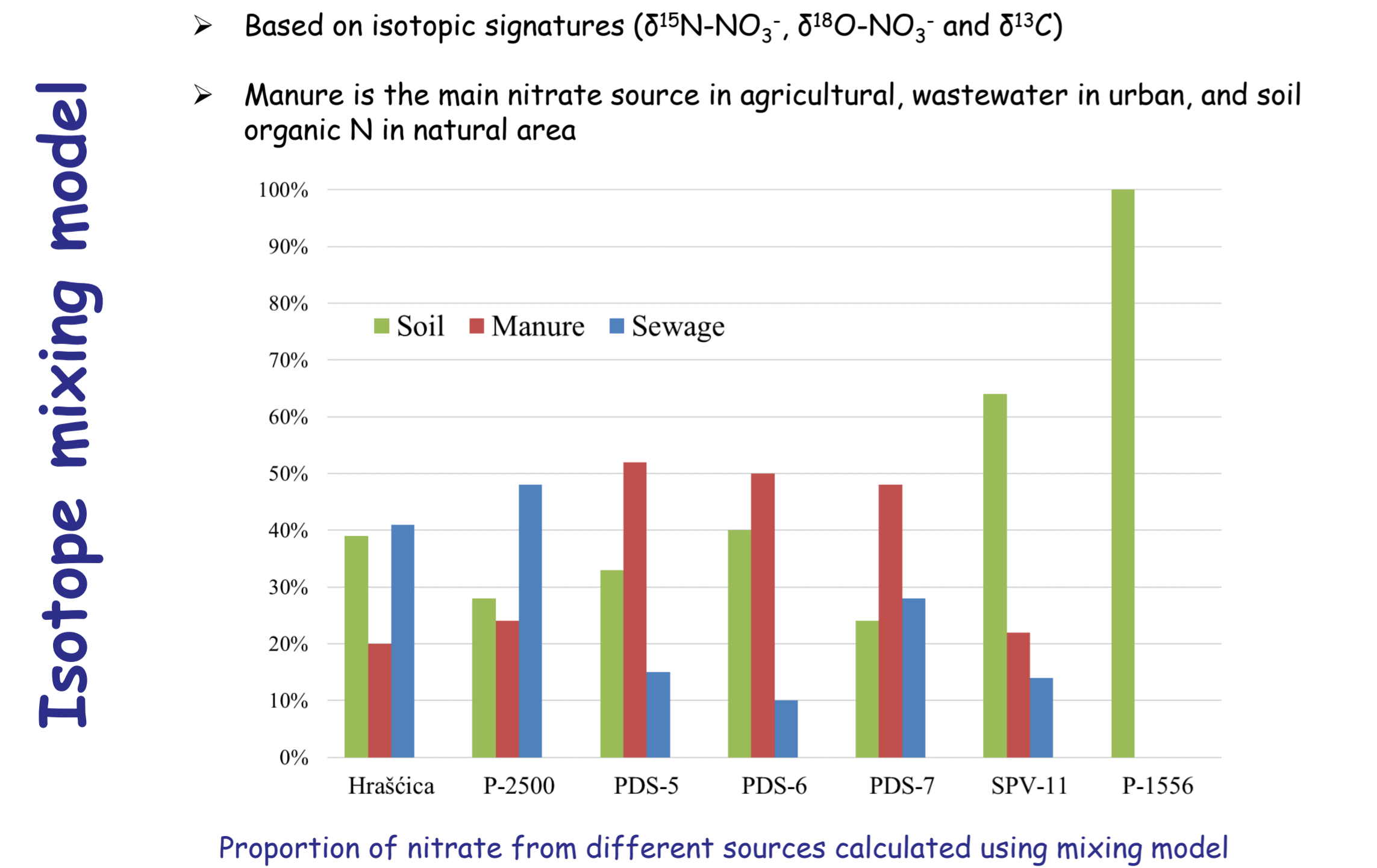
Sampling by pumping the wells and the resulting high nitrate concentrations in groundwater



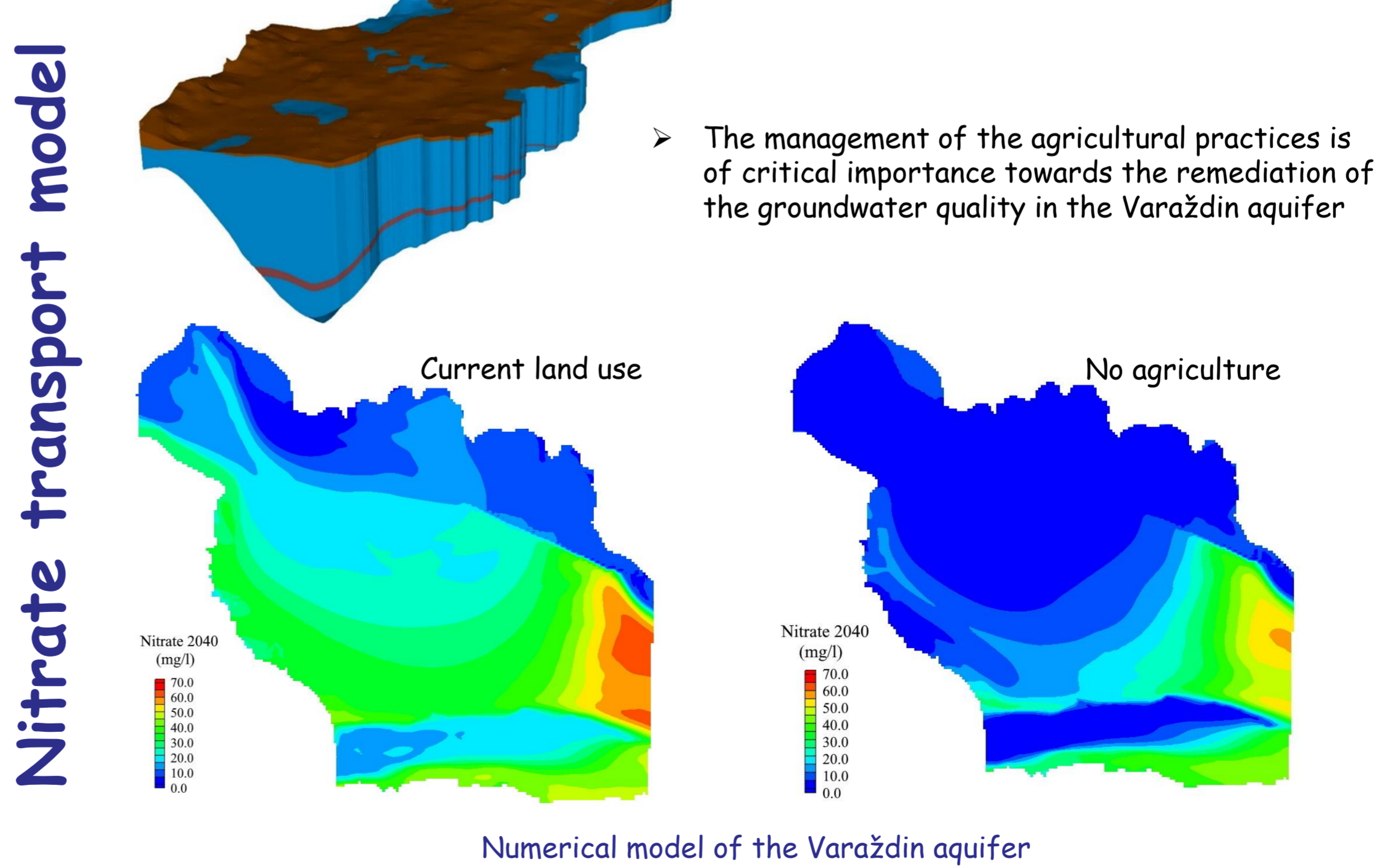
Isotopes in water



Isotopes in nitrate



Isotope mixing model



Nitrate transport model

The present research was supported by the Croatian Scientific Foundation (HRZZ) under grant number HRZZ-IP-2016-06-5365 (TRANITAL); Young Researchers Career Development Project-Training of New PhDs-HRZZ & ESF; COST Action CA19120 (WATSON) and COST ITC Conference grant.